



# GARDEN PLOTS ARE READY FOR SPRING 2023.



---

Reserve yours today!

---



- **Plots available at 4 Gardens:** Columbine, Indian Paintbrush, Primrose & Sunflower
- Plant and cultivate a garden, just steps from your front door!
- Perfect family project with hands-on, interactive learning
- Get to know your neighbors
- Enjoy the fruits of your labor

Interested in renting a plot? Contact  
**[ClientServices@advancehoa.com](mailto:ClientServices@advancehoa.com)**  
See pages 2 & 3 for plot options.



## Columbine Gardens in Lilac Park

Plot	Length	Width	Rental Fee*	
			resident	non-resident
1a	12' 9"	3' 9"	\$25	\$50
1b	12' 9"	3' 9"	\$25	\$50
2a	12' 9"	3' 9"	\$25	\$50
2b	12' 9"	3' 9"	\$25	\$50
3a	12' 9"	7' 9"	\$40	\$80
3b	12' 9"	7' 9"	\$40	\$80
4a	12' 9"	7' 9"	\$40	\$80
4b	12' 9"	7' 9"	\$40	\$80
5a	12' 9"	3' 9"	\$25	\$50
5b	12' 9"	3' 9"	\$25	\$50
6a	12' 9"	3' 9"	\$25	\$50
6b	12' 9"	3' 9"	\$25	\$50
7a	12' 9"	3' 9"	\$25	\$50
7b	12' 9"	3' 9"	\$25	\$50
8a	12' 9"	3' 9"	\$25	\$50
8b	12' 9"	3' 9"	\$25	\$50
9a	12' 9"	3' 9"	\$25	\$50
9b	12' 9"	3' 9"	\$25	\$50

\*Rental Fees are non-refundable.



## Indian Paintbrush Gardens in High Prairie Park

Plot	Length	Width	Rental Fee*	
			resident	non-resident
1a	9' 8"	9'	\$40	\$80
1b	9' 8"	9'	\$40	\$80
2a	9' 8"	9' 3"	\$40	\$80
2b	9' 8"	9' 3"	\$40	\$80
3a	13' 6"	9'	\$40	\$80
3b	13' 6"	9'	\$40	\$80
4a	13' 6"	8' 1"	\$40	\$80
4b	13' 6"	8' 1"	\$40	\$80
5a	13' 6"	8'	\$40	\$80
5b	13' 6"	8'	\$40	\$80
6a	13' 8"	9' 6"	\$40	\$80
6b	13' 8"	9' 6"	\$40	\$80
7a	9' 6"	9' 3"	\$40	\$80
7b	9' 6"	9' 3"	\$40	\$80
8a	9' 6"	8'	\$40	\$80
8b	9' 6"	8'	\$40	\$80

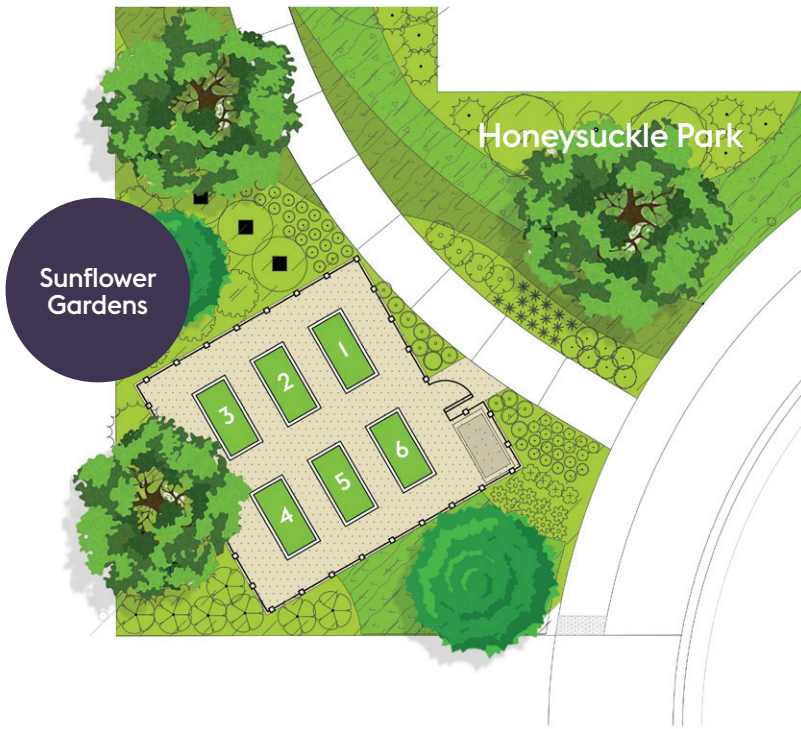
\*Rental Fees are non-refundable.



Live life on the urban prairie...Fresh and unexpected.







## Sunflower Gardens in Honeysuckle Park

Plot	Length	Width	Rental Fee*	
			resident	non-resident
1	7' 4"	3' 4"	\$25	\$50
2	7' 4"	3' 4"	\$25	\$50
3	7' 4"	3' 4"	\$25	\$50
4	7' 4"	3' 4"	\$25	\$50
5	7' 4"	3' 4"	\$25	\$50
6	7' 4"	3' 4"	\$25	\$50

\*Rental Fees are non-refundable.



## Primrose Gardens on The Greenway

Plot*	Length	Width	Rental Fee**	
			resident	non-resident
1a	5' 9"	4' 9"	\$25	\$50
1b	5' 9"	4' 9"	\$25	\$50
2a	5' 9"	4' 9"	\$25	\$50
2b	5' 9"	4' 9"	\$25	\$50
3a	5' 9"	4' 9"	\$25	\$50
3b	5' 9"	4' 9"	\$25	\$50

\* Each "L" shaped plot has a 3' 4" x 2' 3" cutout

\*\* Rental Fees are non-refundable.

Live life on the urban prairie...Fresh and unexpected.

