

LEGAL DESCRIPTION

A PARCEL OF LAND BEING A PART OF SECTION 11, TOWNSHIP 3 SOUTH, RANGE 66 WEST OF THE SIXTH PRINCIPAL MERIDIAN, CITY OF AURORA, COUNTY OF ADAMS, STATE OF COLORADO, BEING MORE PARTICULARLY DESCRIBED AS FOLLOWS:

COMMENCING AT THE NORTHEAST CORNER OF SAID SECTION 11, BEING MONUMENTED BY A FOUND NO. 6 REBAR WITH A 3-1/4 INCH DIAMETER BRASS CAP SET BY PLS 16398, WHENCE THE NORTH QUARTER CORNER OF SAID SECTION 11 BEING MONUMENTED BY A FOUND NO. 6 REBAR WITH A 2 INCH DIAMETER ALUMINUM CAP SET BY PLS 28649 IN A RANGE BOX IS ASSUMED TO BEAR SOUTH 89°55'26" WEST, A DISTANCE OF 2645.82 FEET, WITH ALL BEARINGS CONTAINED HEREIN BEING RELATIVE THERETO;

THENCE SOUTH 86°16'51" WEST A DISTANCE OF 1133.13 FEET TO A POINT OF CURVATURE, BEING THE **POINT OF BEGINNING**;

THENCE ALONG THE ARC OF A CURVE TO THE LEFT HAVING A RADIUS OF 20.00 FEET, A CENTRAL ANGLE OF 90°16'19", AN ARC LENGTH OF 31.51 FEET, THE CHORD OF WHICH BEARS SOUTH 44°47'17" WEST, A DISTANCE OF 28.35 FEET, TO A POINT OF TANGENCY;

THENCE SOUTH 00°20'53" EAST, A DISTANCE OF 201.73 FEET, TO A POINT OF CURVATURE;

THENCE ALONG THE ARC OF A CURVE TO THE LEFT HAVING A RADIUS OF 15.00 FEET, A CENTRAL ANGLE OF 90°00'00", AN ARC LENGTH OF 23.56 FEET, THE CHORD OF WHICH BEARS SOUTH 45°20'53" EAST, A DISTANCE OF 21.21 FEET, TO A POINT OF NON-TANGENCY;

THENCE SOUTH 00°20'53" EAST, A DISTANCE OF 60.00 FEET, TO A POINT OF CURVATURE;

THENCE ALONG THE ARC OF A CURVE TO THE LEFT HAVING A RADIUS OF 15.00 FEET, A CENTRAL ANGLE OF 90°00'00", AN ARC LENGTH OF 23.56 FEET, THE CHORD OF WHICH BEARS SOUTH 44°39'07" WEST, A DISTANCE OF 21.21 FEET, TO A POINT OF TANGENCY;

THENCE SOUTH 00°20'53" EAST, A DISTANCE OF 226.00 FEET, TO A POINT OF CURVATURE;

THENCE ALONG THE ARC OF A CURVE TO THE LEFT HAVING A RADIUS OF 15.00 FEET, A CENTRAL ANGLE OF 90°00'00", AN ARC LENGTH OF 23.56 FEET, THE CHORD OF WHICH BEARS SOUTH 45°20'53" EAST, A DISTANCE OF 21.21 FEET, TO A POINT OF NON-TANGENCY;

THENCE SOUTH 00°20'53" EAST, A DISTANCE OF 64.00 FEET, TO A POINT OF CURVATURE;

THENCE ALONG THE ARC OF A CURVE TO THE LEFT HAVING A RADIUS OF 15.00 FEET, A CENTRAL ANGLE OF 90°00'00", AN ARC LENGTH OF 23.56 FEET, THE CHORD OF WHICH BEARS SOUTH 44°39'07" WEST, A DISTANCE OF 21.21 FEET, TO A POINT OF TANGENCY;

THENCE SOUTH 00°20'53" EAST, A DISTANCE OF 516.31 FEET, TO A POINT OF CURVATURE;

THENCE ALONG THE ARC OF A CURVE TO THE LEFT HAVING A RADIUS OF 15.00 FEET, A CENTRAL ANGLE OF 90°00'00", AN ARC LENGTH OF 23.56 FEET, THE CHORD OF WHICH BEARS SOUTH 45°20'53" EAST, A DISTANCE OF 21.21 FEET, TO A POINT OF NON-TANGENCY;

THENCE SOUTH 00°20'53" EAST, A DISTANCE OF 64.00 FEET, TO A POINT OF CURVATURE;

THENCE ALONG THE ARC OF A CURVE TO THE LEFT HAVING A RADIUS OF 15.00 FEET, A CENTRAL ANGLE OF 90°00'00", AN ARC LENGTH OF 23.56 FEET, THE CHORD OF WHICH BEARS SOUTH 44°39'07" WEST, A DISTANCE OF 21.21 FEET, TO A POINT OF TANGENCY;

THENCE SOUTH 00°20'53" EAST, A DISTANCE OF 180.00 FEET, TO A POINT OF CURVATURE;

THENCE ALONG THE ARC OF A CURVE TO THE LEFT HAVING A RADIUS OF 15.00 FEET, A CENTRAL ANGLE OF 90°00'00", AN ARC LENGTH OF 23.56 FEET, THE CHORD OF WHICH BEARS SOUTH 45°20'53" EAST, A DISTANCE OF 21.21 FEET, TO A POINT OF NON-TANGENCY

THENCE SOUTH 89°39'07" WEST, A DISTANCE OF 1509.17 FEET;

THENCE SOUTH 00°21'41" EAST, A DISTANCE OF 66.00 FEET;

THENCE NORTH 89°39'07" EAST, A DISTANCE OF 14.15 FEET, TO A POINT OF CURVATURE;

THENCE ALONG THE ARC OF A CURVE TO THE RIGHT HAVING A RADIUS OF 20.00 FEET, A CENTRAL ANGLE OF 90°00'00", AN ARC LENGTH OF 31.42 FEET, THE CHORD OF WHICH BEARS SOUTH 45°20'53" EAST, 28.28 FEET, TO A POINT OF TANGENCY;

THENCE SOUTH 00°20'53" EAST, A DISTANCE OF 664.43 FEET, TO A POINT OF CURVATURE;

THENCE ALONG THE ARC OF A CURVE TO THE LEFT HAVING A RADIUS OF 71.00 FEET, A CENTRAL ANGLE OF 47°26'54", AN ARC LENGTH OF 58.80 FEET, THE CHORD OF WHICH BEARS SOUTH 00°20'53" EAST, 57.13 FEET, TO A POINT OF NON-TANGENCY;

THENCE SOUTH 00°20'53" EAST, A DISTANCE OF 270.43 FEET;

THENCE SOUTH 89°39'07" WEST, A DISTANCE OF 33.92 FEET;

THENCE SOUTH 00°21'41" EAST, A DISTANCE OF 96.00 FEET;

THENCE NORTH 89°39'07" EAST, A DISTANCE OF 15.90 FEET, TO A POINT OF CURVATURE;

THENCE ALONG THE ARC OF A CURVE TO THE RIGHT HAVING A RADIUS OF 20.00 FEET, A CENTRAL ANGLE OF 90°00'00", AN ARC LENGTH OF 31.42 FEET, THE CHORD OF WHICH BEARS SOUTH 45°20'53" EAST, 28.28 FEET, TO A POINT OF TANGENCY;

THENCE SOUTH 00°20'53" EAST, A DISTANCE OF 540.59 FEET, TO A POINT OF CURVATURE;

THENCE ALONG THE ARC OF A CURVE TO THE LEFT HAVING A RADIUS OF 530.00 FEET, A CENTRAL ANGLE OF 06°24'28", AN ARC LENGTH OF 59.27 FEET, THE CHORD OF WHICH BEARS SOUTH 03°33'07" EAST, 59.24 FEET, TO A POINT OF TANGENCY;

THENCE SOUTH 06°45'21" EAST, A DISTANCE OF 56.50 FEET, TO A POINT OF CURVATURE;

THENCE ALONG THE ARC OF A CURVE TO THE RIGHT HAVING A RADIUS OF 15.00 FEET, A CENTRAL ANGLE OF 92°01'45", AN ARC LENGTH OF 24.09 FEET, THE CHORD OF WHICH BEARS SOUTH 39°15'32" WEST, 21.59 FEET, TO A POINT OF NON-TANGENCY;

THENCE SOUTH 04°43'36" EAST, A DISTANCE OF 49.00 FEET, TO A POINT OF CURVATURE;

THENCE ALONG THE ARC OF A CURVE TO THE RIGHT HAVING A RADIUS OF 1299.00 FEET, A CENTRAL ANGLE OF 04°22'35", AN ARC LENGTH OF 99.22 FEET, THE CHORD OF WHICH BEARS SOUTH 87°27'42" WEST, 99.20 FEET, TO A POINT OF TANGENCY;

THENCE SOUTH 89°38'59" WEST, A DISTANCE OF 149.48 FEET, TO A POINT OF CURVATURE;

THENCE ALONG THE ARC OF A CURVE TO THE LEFT HAVING A RADIUS OF 20.00 FEET, A CENTRAL ANGLE OF 90°08'12", AN ARC LENGTH OF 31.46 FEET, THE CHORD OF WHICH BEARS SOUTH 44°34'53" WEST, 28.32 FEET, TO A POINT OF NON-TANGENCY;

THENCE SOUTH 89°40'58" WEST, A DISTANCE OF 83.00 FEET;

THENCE NORTH 00°29'13" WEST, A DISTANCE OF 1836.33 FEET, TO A POINT OF CURVATURE;

THENCE ALONG THE ARC OF A CURVE TO THE RIGHT HAVING A RADIUS OF 1045.00 FEET, A CENTRAL ANGLE OF 20°43'10", AN ARC LENGTH OF 377.90 FEET, THE CHORD OF WHICH BEARS NORTH 09°52'22" EAST, 375.84 FEET, TO A POINT OF REVERSE CURVATURE;

THENCE ALONG THE ARC OF A CURVE TO THE LEFT HAVING A RADIUS OF 949.00 FEET, A CENTRAL ANGLE OF 20°43'10", AN ARC LENGTH OF 343.18 FEET, THE CHORD OF WHICH BEARS NORTH 09°52'22" EAST, 341.31 FEET, TO A POINT OF TANGENCY;

THENCE NORTH 00°29'13" WEST, A DISTANCE OF 842.21 FEET;

THENCE NORTH 89°55'04" EAST, A DISTANCE OF 194.41 FEET;

THENCE NORTH 89°55'26" EAST, A DISTANCE OF 1514.94 FEET, TO THE **POINT OF BEGINNING**.

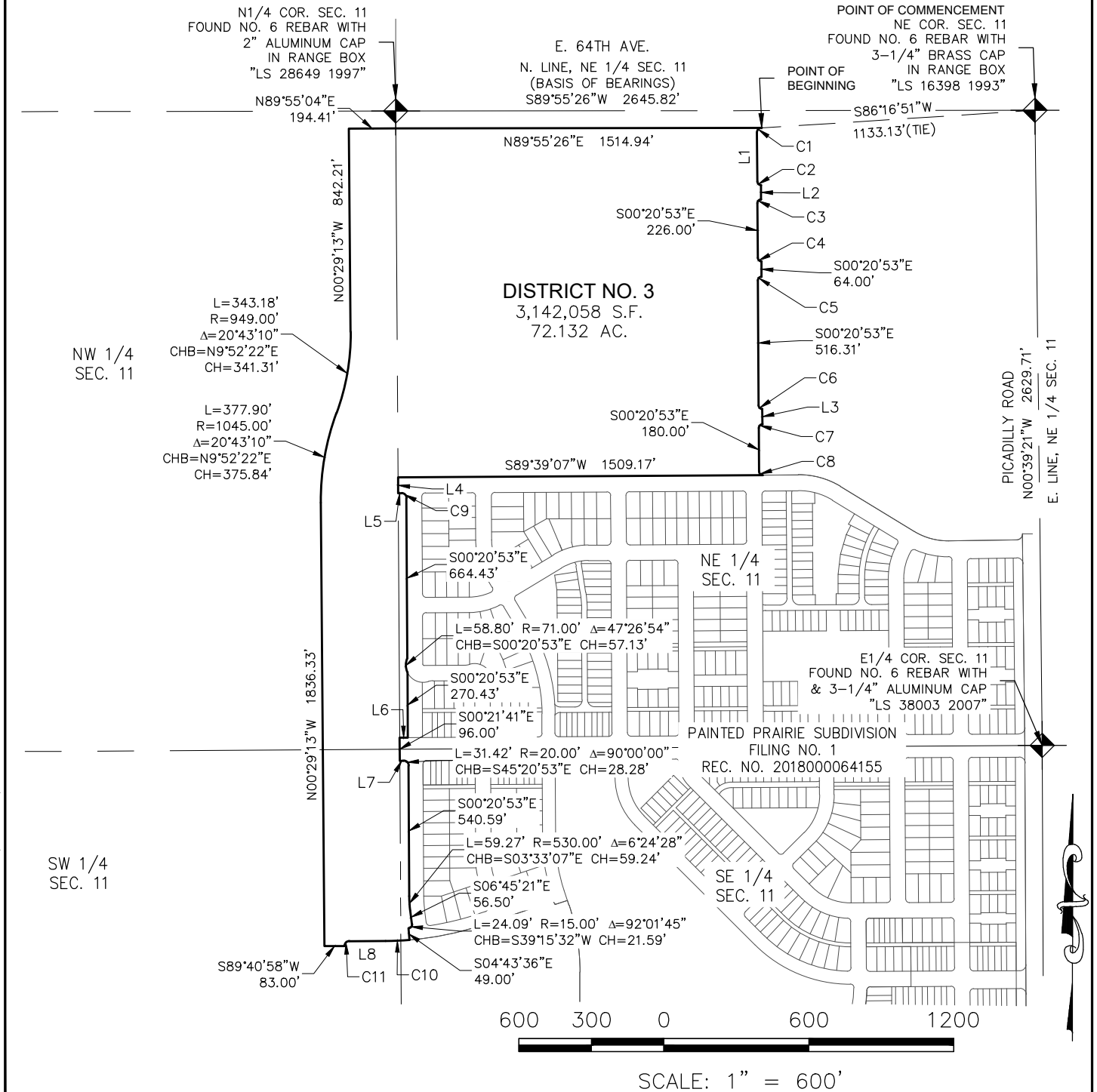
THE DESCRIBED PARCEL CONTAINS A CALCULATED AREA OF 3,142,058 SQUARE FEET OR 72.132 ACRES, MORE OR LESS.

THE LINEAL UNIT USED IN THE PREPARATION OF THESE DESCRIPTIONS IS THE U.S. SURVEY FOOT AS DEFINED BY THE UNITED STATES DEPARTMENT OF COMMERCE, NATIONAL INSTITUTE OF STANDARDS AND TECHNOLOGY.

I, KEVIN J. KUCHARCZYK, A SURVEYOR LICENSED IN THE STATE OF COLORADO, DO HEREBY CERTIFY THAT THE ABOVE LEGAL DESCRIPTION AND ATTACHED EXHIBIT WERE PREPARED BY ME OR UNDER MY DIRECT SUPERVISION AND CHECKING.

KEVIN J. KUCHARCZYK, P.L.S. 34591
FOR AND ON BEHALF OF
CVL CONSULTANTS OF COLORADO, INC.
10333 E. DRY CREEK ROAD, SUITE 240
ENGLEWOOD, CO 80112

ILLUSTRATION FOR EXHIBIT A



THE ABOVE DESCRIBED PARCEL CONTAINS 3,142,058 SQUARE FEET OR (72.132 ACRES) MORE OR LESS.
 This illustration does not represent a monumented survey. It is intended only to depict the attached legal description.

CITY OF AURORA, COLORADO

A PARCEL SITUATED IN SECTION 11, T3S, R66W,
 6TH P.M., CITY OF AURORA, ADAMS COUNTY,
 COLORADO.

| | | |
|--------------------|---------------------|---------------------------|
| DRAWN BY: MJP | SCALE: 1" = 600' | R.O.W. FILE NUMBER |
| CHECKED BY: KJK | DATE: 9/20/2019 | JOB NUMBER: 8130155402 |

N:\PROJECTS\PAINTED PRAIRIE\ADMSURVEY\LEGAL\SDISTRICT 3.DWG. MICHAELP. 9/24/19

ILLUSTRATION FOR EXHIBIT A

| LINE TABLE | | |
|------------|-------------|---------|
| LINE NO. | DIRECTION | LENGTH |
| L1 | S00°20'53"E | 201.73' |
| L2 | S00°20'53"E | 60.00' |
| L3 | S00°20'53"E | 64.00' |
| L4 | S00°21'41"E | 66.00' |
| L5 | N89°39'07"E | 14.15' |
| L6 | S89°39'07"W | 33.92' |
| L7 | N89°39'07"E | 15.90' |
| L8 | S89°38'59"W | 149.48' |

| CURVE TABLE | | | | | |
|-------------|----------|-----------|--------|-----------------|--------------|
| CURVE NO. | RADIUS | DELTA | LENGTH | CHORD DIRECTION | CHORD LENGTH |
| C1 | 20.00' | 90°16'19" | 31.51' | S44°47'17"W | 28.35' |
| C2 | 15.00' | 90°00'00" | 23.56' | S45°20'53"E | 21.21' |
| C3 | 15.00' | 90°00'00" | 23.56' | S44°39'07"W | 21.21' |
| C4 | 15.00' | 90°00'00" | 23.56' | S45°20'53"E | 21.21' |
| C5 | 15.00' | 89°59'59" | 23.56' | S44°39'07"W | 21.21' |
| C6 | 15.00' | 90°00'00" | 23.56' | S45°20'53"E | 21.21' |
| C7 | 15.00' | 89°59'59" | 23.56' | S44°39'07"W | 21.21' |
| C8 | 15.00' | 90°00'00" | 23.56' | S45°20'53"E | 21.21' |
| C9 | 20.00' | 90°00'00" | 31.42' | S45°20'53"E | 28.28' |
| C10 | 1299.00' | 4°22'35" | 99.22' | S87°27'42"W | 99.20' |
| C11 | 20.00' | 90°08'12" | 31.46' | S44°34'53"W | 28.32' |

THE ABOVE DESCRIBED PARCEL CONTAINS 3,142,058 SQUARE FEET OR (72.132 ACRES) MORE OR LESS.

This illustration does not represent a monumented survey. It is intended only to depict the attached legal description.

| | | | |
|--------------------------|---------------------|---------------------------|---|
| CITY OF AURORA, COLORADO | | | A PARCEL SITUATED IN SECTION 11, T3S, R66W, 6TH P.M., CITY OF AURORA, ADAMS COUNTY, COLORADO. |
| DRAWN BY: | SCALE: 1" = 600' | R.O.W. FILE NUMBER | |
| CHECKED BY: | DATE: 9/20/2019 | JOB NUMBER: 8130155402 | |

EXHIBIT A

NE 1/4, SECTION 11, TOWNSHIP 3 SOUTH, RANGE 66 WEST 6th P.M.
----CITY OF AURORA, COUNTY OF ADAMS, STATE OF COLORADO----

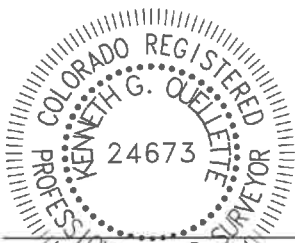
PROPERTY DESCRIPTION

A PARCEL OF LAND BEING A PORTION OF THE NORTHEAST QUARTER OF SECTION 11, TOWNSHIP 3 SOUTH, RANGE 66 WEST OF THE 6TH PRINCIPAL MERIDIAN, CITY OF AURORA, COUNTY OF ADAMS, STATE OF COLORADO AND BEING MORE PARTICULARLY DESCRIBED AS FOLLOWS:

BEARINGS ARE ASSUMED AND ARE BASED ON THE EAST LINE OF THE NORTHEAST QUARTER OF SECTION 11, TOWNSHIP 3 SOUTH, RANGE 66 WEST OF THE 6TH PRINCIPAL MERIDIAN AS BEARING $N00^{\circ}39'21''W$ BETWEEN THE EAST QUARTER CORNER OF SAID SECTION 11 AND THE NORTHEAST CORNER OF SAID SECTION 11. BASED ON THE CITY OF AURORA HORIZONTAL CONTROL NETWORK, COLORADO STATE PLANE CENTRAL ZONE 1983/1992 HARN. THIS DESCRIPTION UTILIZED RECORDED DOCUMENTS FROM THE ADAMS COUNTY CLERK AND RECORDER'S OFFICE AND DOES NOT REPRESENT A MONUMENTED LAND SURVEY AND SHOULD NOT BE RELIED UPON AS SUCH.

COMMENCING AT SAID EAST QUARTER CORNER OF SECTION 11;
THENCE $N04^{\circ}44'05''W$ A DISTANCE OF 1012.22 FEET TO A POINT ON A LINE BEING 72.00 FEET WESTERLY OF AN PARALLEL WITH SAID EAST LINE OF THE NORTHEAST QUARTER OF SECTION 11, SAID POINT BEING THE **POINT OF BEGINNING**;
THENCE $S89^{\circ}20'39''W$ A DISTANCE OF 150.00 FEET;
THENCE $N00^{\circ}39'21''W$ A DISTANCE OF 67.00 FEET;
THENCE $N89^{\circ}20'39''E$ A DISTANCE OF 150.00 FEET TO A POINT ON SAID PARALLEL LINE;
THENCE $S00^{\circ}39'21''E$ ALONG SAID PARALLEL LINE A DISTANCE OF 67.00 FEET TO THE **POINT OF BEGINNING**.

CONTAINING 10,050 SQUARE FEET (0.231 ACRES), MORE OR LESS.



KENNETH G. OUELLETTE, P.L.S. 24673
DATE: JULY 20, 2022
JOB NO. 65419757
FOR AND ON BEHALF OF MERRICK & COMPANY



MERRICK

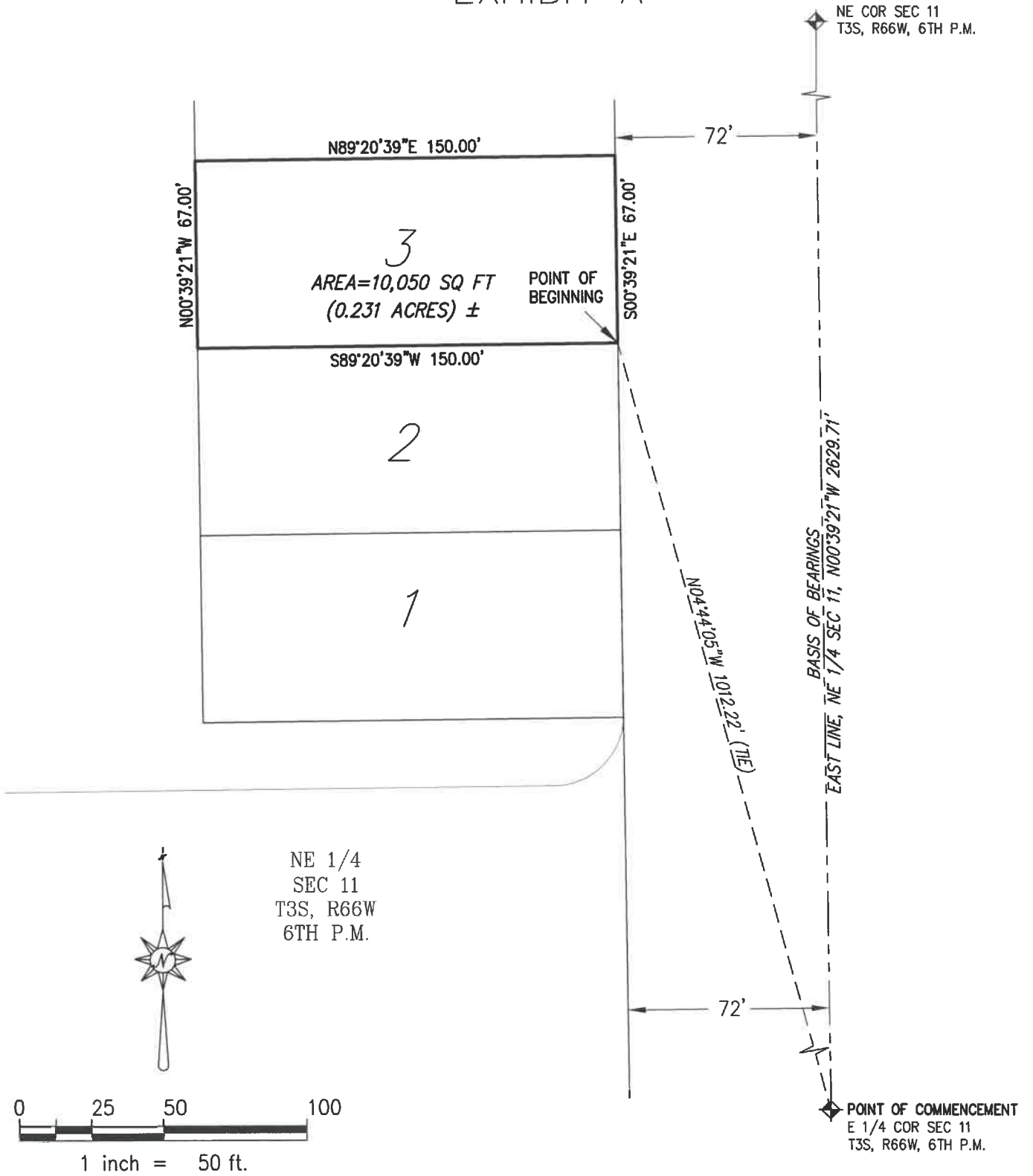
5970 Greenwood Plaza Blvd., Greenwood Village, CO 80111
Telephone: 303-751-0741

PAINTED PRAIRIE METROPOLITAN
DISTRICT NO. 3 DIRECTOR'S PARCEL

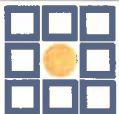
DATE: 7/20/22

SHEET: 1 OF 2

ILLUSTRATION FOR EXHIBIT A



This illustration does not represent a monumented survey. It is intended only to depict the attached legal description.



MERRICK

5970 Greenwood Plaza Blvd., Greenwood Village, CO 80111
Telephone: 303-751-0741

PAINTED PRAIRIE METROPOLITAN
DISTRICT NO. 3 DIRECTOR'S PARCEL

DATE: 7/20/22

SHEET: 2 OF 2