

EXHIBIT A

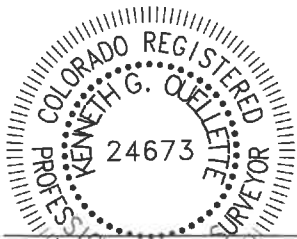
SECTION 11, TOWNSHIP 3 SOUTH, RANGE 66 WEST 6th P.M.
-----CITY OF AURORA, COUNTY OF ADAMS, STATE OF COLORADO-----

PROPERTY DESCRIPTION

A PARCEL OF LAND BEING A PORTION OF SECTION 11, TOWNSHIP 3 SOUTH, RANGE 66 WEST OF THE 6TH PRINCIPAL MERIDIAN, CITY OF AURORA, COUNTY OF ADAMS, STATE OF COLORADO AND BEING MORE PARTICULARLY DESCRIBED AS FOLLOWS:

BEARINGS ARE ASSUMED AND ARE BASED ON THE NORTH LINE OF THE NORTHWEST QUARTER OF SECTION 11, TOWNSHIP 3 SOUTH, RANGE 66 WEST OF THE 6TH PRINCIPAL MERIDIAN AS BEARING N89°55'04"E BETWEEN THE NORTHWEST CORNER OF SAID SECTION 11 AND THE NORTH QUARTER CORNER OF SAID SECTION 11. BASED ON THE CITY OF AURORA HORIZONTAL CONTROL NETWORK, COLORADO STATE PLANE CENTRAL ZONE 1983/1992 HARN. THIS DESCRIPTION UTILIZED RECORDED DOCUMENTS FROM THE ADAMS COUNTY CLERK AND RECORDER'S OFFICE AND DOES NOT REPRESENT A MONUMENTED LAND SURVEY AND SHOULD NOT BE RELIED UPON AS SUCH.

COMMENCING AT SAID NORTHWEST CORNER OF SECTION 11;
THENCE S21°02'39"E A DISTANCE OF 1314.41 FEET TO THE **POINT OF BEGINNING**;
THENCE S02°28'11"E A DISTANCE OF 65.00 FEET;
THENCE S08°40'20"E A DISTANCE OF 41.18 FEET;
THENCE S14°33'03"E A DISTANCE OF 59.46 FEET;
THENCE S21°16'32"E A DISTANCE OF 67.65 FEET;
THENCE S18°04'01"E A DISTANCE OF 50.48 FEET;
THENCE S11°52'29"E A DISTANCE OF 50.48 FEET;
THENCE S05°40'56"E A DISTANCE OF 50.48 FEET;
THENCE S00°30'36"W A DISTANCE OF 50.48 FEET;
THENCE S06°25'36"W A DISTANCE OF 45.98 FEET;
THENCE S11°32'35"W A DISTANCE OF 45.96 FEET;
THENCE S09°19'11"W A DISTANCE OF 63.81 FEET;
THENCE S04°23'18"W A DISTANCE OF 63.81 FEET;
THENCE S00°09'57"E A DISTANCE OF 54.05 FEET;
THENCE S04°43'23"E A DISTANCE OF 63.89 FEET;
THENCE S20°43'18"E A DISTANCE OF 62.42 FEET;
THENCE S24°01'17"E A DISTANCE OF 41.06 FEET;
THENCE S20°01'57"E A DISTANCE OF 41.06 FEET;
THENCE S02°48'50"E A DISTANCE OF 71.79 FEET;
THENCE S07°39'16"W A DISTANCE OF 49.36 FEET;



KENNETH G. OUELLETTE, P.L.S. 24673
DATE: NOVEMBER 16, 2022
JOB NO. 65419757
FOR AND ON BEHALF OF MERRICK & COMPANY



5970 Greenwood Plaza Blvd., Greenwood Village, CO 80111
Telephone: 303-751-0741

PAINTED PRAIRIE METROPOLITAN
DISTRICT NO. 4-1

DATE: 11/16/22

SHEET: 1 OF 4

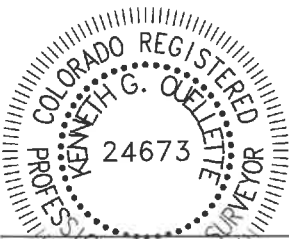
EXHIBIT A

SECTION 11, TOWNSHIP 3 SOUTH, RANGE 66 WEST 6th P.M.
-----CITY OF AURORA, COUNTY OF ADAMS, STATE OF COLORADO-----

PROPERTY DESCRIPTION

THENCE S16°01'23"W A DISTANCE OF 48.49 FEET;
THENCE S30°09'42"W A DISTANCE OF 48.49 FEET;
THENCE S44°18'02"W A DISTANCE OF 48.49 FEET;
THENCE S57°10'49"W A DISTANCE OF 39.89 FEET;
THENCE S62°59'26"W A DISTANCE OF 153.67 FEET;
THENCE S82°15'03"W A DISTANCE OF 45.63 FEET;
THENCE N85°24'52"W A DISTANCE OF 102.49 FEET;
THENCE N56°13'56"W A DISTANCE OF 52.94 FEET;
THENCE N42°13'11"W A DISTANCE OF 52.94 FEET;
THENCE N30°08'12"W A DISTANCE OF 38.41 FEET;
THENCE S89°43'57"W A DISTANCE OF 40.00 FEET;
THENCE N00°16'03"W TANGENT WITH THE FOLLOWING DESCRIBED CURVE A DISTANCE OF 1636.91 FEET;
THENCE ALONG THE ARC OF A CURVE TO THE LEFT, HAVING A CENTRAL ANGLE OF 89°57'19", A RADIUS OF 20.00 FEET, A CHORD BEARING S45°14'42"E A DISTANCE OF 28.27 FEET, AND AN ARC DISTANCE OF 31.40 FEET; (NEXT COURSE TANGENT WITH THE LAST DESCRIBED CURVE)
THENCE N89°46'39"E TANGENT WITH THE FOLLOWING DESCRIBED CURVE A DISTANCE OF 156.33 FEET;
THENCE ALONG THE ARC OF A CURVE TO THE RIGHT, HAVING A CENTRAL ANGLE OF 47°01'37", A RADIUS OF 407.00 FEET, A CHORD BEARING S66°42'33"E A DISTANCE OF 324.76 FEET, AND AN ARC DISTANCE OF 334.06 FEET; (NEXT COURSE TANGENT WITH THE LAST DESCRIBED CURVE)
THENCE S43°11'44"E TANGENT WITH THE FOLLOWING DESCRIBED CURVE A DISTANCE OF 57.02 FEET;
THENCE ALONG THE ARC OF A CURVE TO THE LEFT, HAVING A CENTRAL ANGLE OF 17°15'07", A RADIUS OF 93.00 FEET, A CHORD BEARING S51°49'18"E A DISTANCE OF 27.90 FEET, AND AN ARC DISTANCE OF 28.00 FEET; (NEXT COURSE NON-TANGENT WITH THE LAST DESCRIBED CURVE)
THENCE S28°05'19"W A DISTANCE OF 130.63 FEET;
THENCE S20°23'23"W A DISTANCE OF 65.15 FEET;
THENCE S12°45'22"W A DISTANCE OF 65.50 FEET;
THENCE S05°07'43"W A DISTANCE OF 65.05 FEET TO THE **POINT OF BEGINNING.**

CONTAINING 18.437 ACRES, MORE OR LESS.



KENNETH G. OUELLETTE, P.L.S. 24673
DATE: NOVEMBER 16, 2022
JOB NO. 65419757
FOR AND ON BEHALF OF MERRICK & COMPANY



5970 Greenwood Plaza Blvd., Greenwood Village, CO 80111
Telephone: 303-751-0741

PAINTED PRAIRIE METROPOLITAN
DISTRICT NO. 4-1

DATE: 11/16/22

SHEET: 2 OF 4

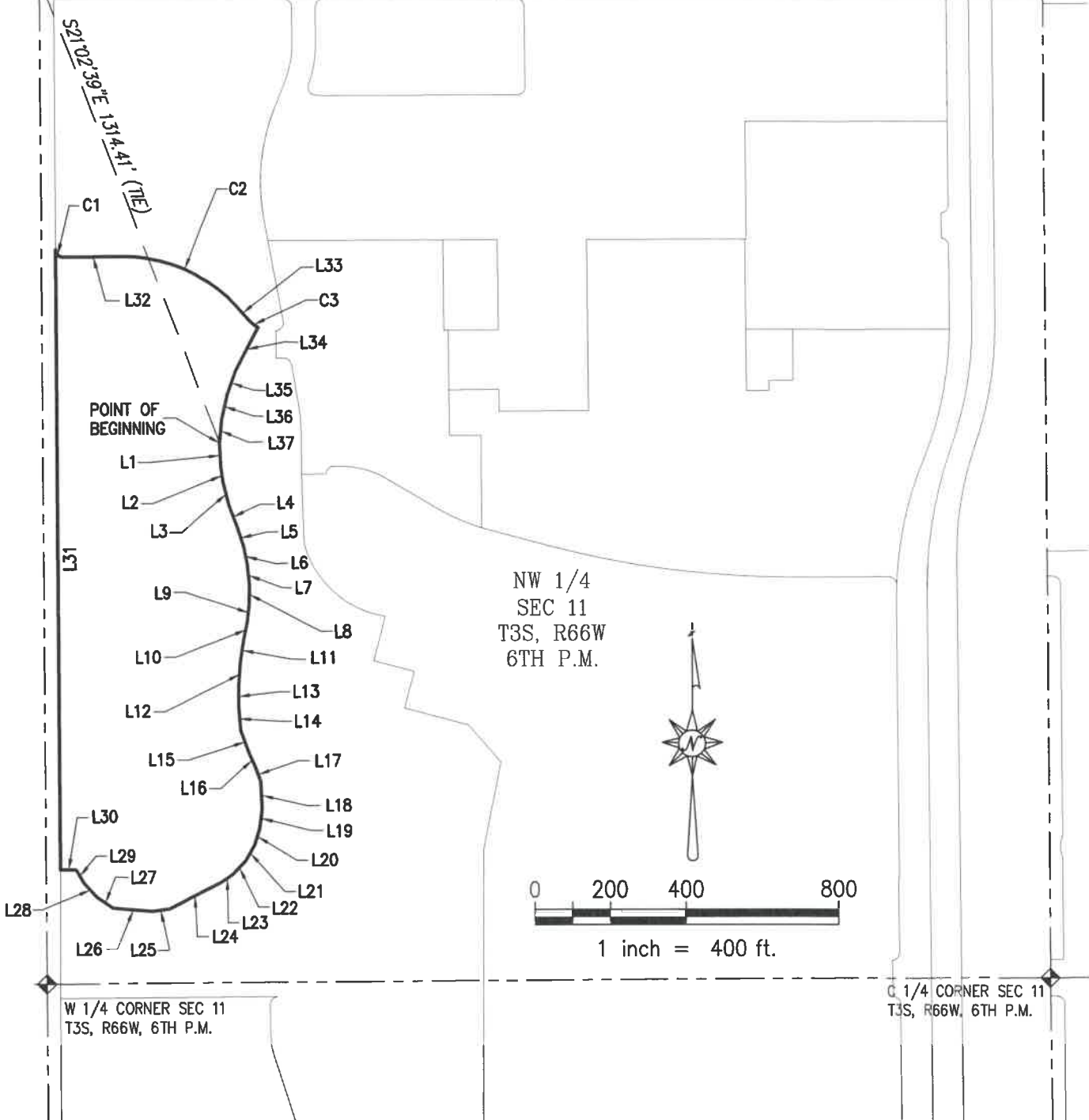
ILLUSTRATION FOR EXHIBIT A

POINT OF COMMENCEMENT
NW CORNER SEC 11
T3S, R66W, 6TH P.M.

E. 64TH AVENUE
(PUBLIC ROW VARIES)
BASIS OF BEARINGS

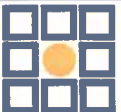
N 1/4 CORNER SEC 11
T3S, R66W, 6TH P.M.

NORTH LINE, NW 1/4 SEC 11, S89°55'04"W 2645.51'



THE ABOVE DESCRIBED PARCEL CONTAINS 18.437 ACRES MORE OR LESS.

This illustration does not represent a monumented survey. It is intended only to depict the attached legal description.



MERRICK

5970 Greenwood Plaza Blvd., Greenwood Village, CO 80111
Telephone: 303-751-0741

PAINTED PRAIRIE METROPOLITAN
DISTRICT NO. 4-1

DATE: 11/16/22

SHEET: 3 OF 4

ILLUSTRATION FOR EXHIBIT A

LINE TABLE		
LINE #	BEARING	LENGTH
L1	S02°28'11"E	65.00'
L2	S08°40'20"E	41.18'
L3	S14°33'03"E	59.46'
L4	S21°16'32"E	67.65'
L5	S18°04'01"E	50.48'
L6	S11°52'29"E	50.48'
L7	S05°40'56"E	50.48'
L8	S00°30'36"W	50.48'
L9	S06°25'36"W	45.98'
L10	S11°32'35"W	45.96'
L11	S09°19'11"W	63.81'
L12	S04°23'18"W	63.81'
L13	S00°09'57"E	54.05'
L14	S04°43'23"E	63.89'
L15	S20°43'18"E	62.42'
L16	S24°01'17"E	41.06'
L17	S20°01'57"E	41.06'
L18	S02°48'50"E	71.79'
L19	S07°39'16"W	49.36'
L20	S16°01'23"W	48.49'

LINE TABLE		
LINE #	BEARING	LENGTH
L21	S30°09'42"W	48.49'
L22	S44°18'02"W	48.49'
L23	S57°10'49"W	39.89'
L24	S62°59'26"W	153.67'
L25	S82°15'03"W	45.63'
L26	N85°24'52"W	102.49'
L27	N56°13'56"W	52.94'
L28	N42°13'11"W	52.94'
L29	N30°08'12"W	38.41'
L30	S89°43'57"W	40.00'
L31	N00°16'03"W	1636.91'
L32	N89°46'39"E	156.33'
L33	S43°11'44"E	57.02'
L34	S28°05'19"W	130.63'
L35	S20°23'23"W	65.15'
L36	S12°45'22"W	65.50'
L37	S05°07'43"W	65.05'

CURVE TABLE					
CURVE #	DELTA	RADIUS	CHORD BEARING	CHORD LENGTH	LENGTH
C1	89°57'19"	20.00'	S45°14'42"E	28.27'	31.40'
C2	47°01'37"	407.00'	S66°42'33"E	324.76'	334.06'
C3	17°15'07"	93.00'	S51°49'18"E	27.90'	28.00'

This illustration does not represent a monumented survey. It is intended only to depict the attached legal description.

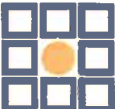
 <p>MERRICK 5970 Greenwood Plaza Blvd., Greenwood Village, CO 80111 Telephone: 303-751-0741</p>	<p>PAINTED PRAIRIE METROPOLITAN DISTRICT NO. 4-1</p>	<p>DATE: 11/16/22</p>
	<p>SHEET: 4 OF 4</p>	

EXHIBIT A

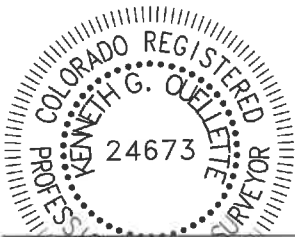
SECTION 11, TOWNSHIP 3 SOUTH, RANGE 66 WEST 6th P.M.
-----CITY OF AURORA, COUNTY OF ADAMS, STATE OF COLORADO-----

PROPERTY DESCRIPTION

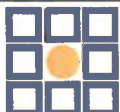
A PARCEL OF LAND BEING A PORTION OF SECTION 11, TOWNSHIP 3 SOUTH, RANGE 66 WEST OF THE 6TH PRINCIPAL MERIDIAN, CITY OF AURORA, COUNTY OF ADAMS, STATE OF COLORADO AND BEING MORE PARTICULARLY DESCRIBED AS FOLLOWS:

BEARINGS ARE ASSUMED AND ARE BASED ON THE NORTH LINE OF THE SOUTHWEST QUARTER OF SECTION 11, TOWNSHIP 3 SOUTH, RANGE 66 WEST OF THE 6TH PRINCIPAL MERIDIAN AS BEARING N89°39'07"E BETWEEN THE WEST QUARTER CORNER OF SAID SECTION 11 AND THE CENTER QUARTER CORNER OF SAID SECTION 11. BASED ON THE CITY OF AURORA HORIZONTAL CONTROL NETWORK, COLORADO STATE PLANE CENTRAL ZONE 1983/1992 HARN. THIS DESCRIPTION UTILIZED RECORDED DOCUMENTS FROM THE ADAMS COUNTY CLERK AND RECORDER'S OFFICE AND DOES NOT REPRESENT A MONUMENTED LAND SURVEY AND SHOULD NOT BE RELIED UPON AS SUCH.

COMMENCING AT SAID WEST QUARTER CORNER OF SECTION 11;
THENCE S43°18'18"E A DISTANCE OF 50.56 FEET TO THE **POINT OF BEGINNING**;
THENCE N89°39'07"E TANGENT WITH THE FOLLOWING DESCRIBED CURVE A DISTANCE OF 574.99 FEET;
THENCE ALONG THE ARC OF A CURVE TO THE LEFT, HAVING A CENTRAL ANGLE OF 90°00'00", A RADIUS OF 20.00 FEET, A CHORD BEARING S44°39'07"W A DISTANCE OF 28.28 FEET, AND AN ARC DISTANCE OF 31.42 FEET;
THENCE S00°20'53"E NON-TANGENT WITH THE LAST DESCRIBED CURVE AND TANGENT WITH THE FOLLOWING DESCRIBED CURVE A DISTANCE OF 68.30 FEET;
THENCE ALONG THE ARC OF A CURVE TO THE LEFT, HAVING A CENTRAL ANGLE OF 17°08'19", A RADIUS OF 236.00 FEET, A CHORD BEARING S08°55'02"E A DISTANCE OF 70.33 FEET, AND AN ARC DISTANCE OF 70.59 FEET;
THENCE S17°29'11"E TANGENT WITH THE LAST AND FOLLOWING DESCRIBED CURVES A DISTANCE OF 576.80 FEET;
THENCE ALONG THE ARC OF A CURVE TO THE RIGHT, HAVING A CENTRAL ANGLE OF 17°12'03", A RADIUS OF 264.00 FEET, A CHORD BEARING S08°53'10"E A DISTANCE OF 78.96 FEET, AND AN ARC DISTANCE OF 79.26 FEET;
THENCE S00°17'08"E TANGENT WITH THE LAST AND FOLLOWING DESCRIBED CURVES A DISTANCE OF 262.69 FEET;
THENCE ALONG THE ARC OF A CURVE TO THE LEFT, HAVING A CENTRAL ANGLE OF 23°15'22", A RADIUS OF 76.00 FEET, A CHORD BEARING S11°54'49"E A DISTANCE OF 30.64 FEET, AND AN ARC DISTANCE OF 30.85 FEET;



KENNETH G. OUELLETTE, P.L.S. 24673
DATE: NOVEMBER 16, 2022
JOB NO. 65419757
FOR AND ON BEHALF OF MERRICK & COMPANY



MERRICK

5970 Greenwood Plaza Blvd., Greenwood Village, CO 80111
Telephone: 303-751-0741

PAINTED PRAIRIE METROPOLITAN
DISTRICT NO. 4-2

DATE: 11/16/22

SHEET: 1 OF 4

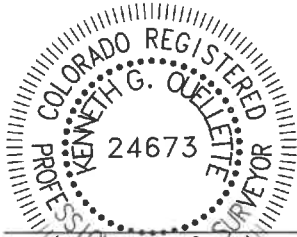
EXHIBIT A

SECTION 11, TOWNSHIP 3 SOUTH, RANGE 66 WEST 6th P.M.
-----CITY OF AURORA, COUNTY OF ADAMS, STATE OF COLORADO-----

PROPERTY DESCRIPTION

THENCE ALONG THE ARC OF A TANGENT CURVE TO THE RIGHT, HAVING A CENTRAL ANGLE OF 23°15'22", A RADIUS OF 84.00 FEET, A CHORD BEARING S11°54'49"E A DISTANCE OF 33.86 FEET, AND AN ARC DISTANCE OF 34.10 FEET;
THENCE ALONG THE ARC OF A TANGENT CURVE TO THE RIGHT, HAVING A CENTRAL ANGLE OF 37°47'04", A RADIUS OF 62.00 FEET, A CHORD BEARING S18°36'24"W A DISTANCE OF 40.15 FEET, AND AN ARC DISTANCE OF 40.89 FEET;
THENCE S00°17'08"E NON-TANGENT WITH THE LAST DESCRIBED CURVE A DISTANCE OF 599.23 FEET;
THENCE S89°42'52"W A DISTANCE OF 748.02 FEET;
THENCE N00°17'08"W A DISTANCE OF 1749.38 FEET TO THE **POINT OF BEGINNING**.

CONTAINING 28.138 ACRES, MORE OR LESS.



KENNETH G. OUELLETTE, P.L.S. 24673
DATE: NOVEMBER 16, 2022
JOB NO. 65419757
FOR AND ON BEHALF OF MERRICK & COMPANY



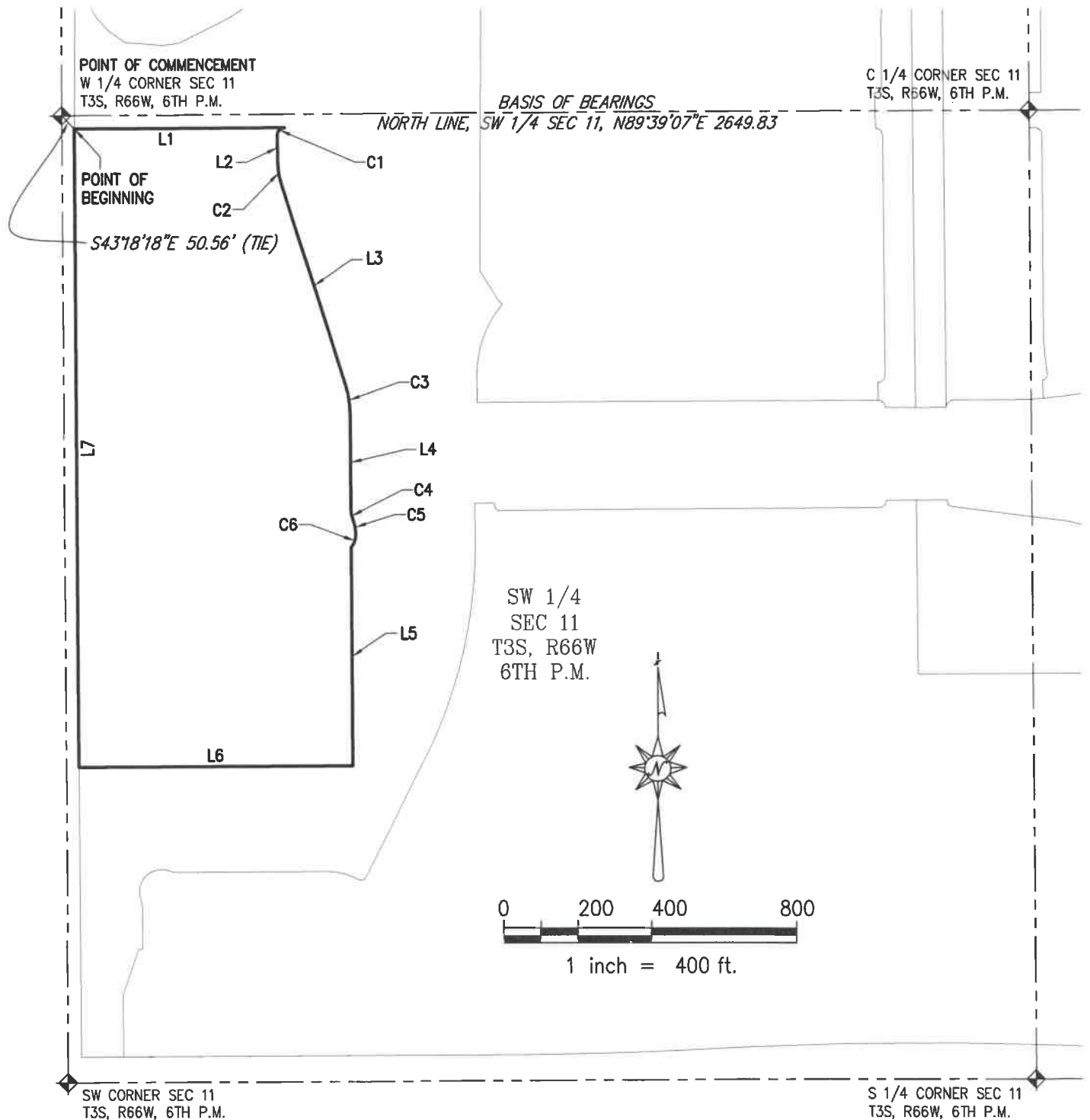
5970 Greenwood Plaza Blvd., Greenwood Village, CO 80111
Telephone: 303-751-0741

PAINTED PRAIRIE METROPOLITAN
DISTRICT NO. 4-2

DATE: 11/16/22

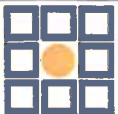
SHEET: 2 OF 4

ILLUSTRATION FOR EXHIBIT A



THE ABOVE DESCRIBED PARCEL CONTAINS 28.138 ACRES MORE OR LESS.

This illustration does not represent a monumented survey. It is intended only to depict the attached legal description.



MERRICK

5970 Greenwood Plaza Blvd., Greenwood Village, CO 80111
Telephone: 303-751-0741

PAINTED PRAIRIE METROPOLITAN
DISTRICT NO. 4-2

DATE: 11/16/22

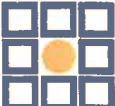
SHEET: 3 OF 4

ILLUSTRATION FOR EXHIBIT A

LINE TABLE		
LINE #	BEARING	LENGTH
L1	N89°39'07"E	574.99'
L2	S00°20'53"E	68.30'
L3	S17°29'11"E	576.80'
L4	S00°17'08"E	262.69'
L5	S00°17'08"E	599.23'
L6	S89°42'52"W	748.02'
L7	N00°17'08"W	1749.38'

CURVE TABLE					
CURVE #	DELTA	RADIUS	CHORD BEARING	CHORD LENGTH	LENGTH
C1	90°00'00"	20.00'	S44°39'07"W	28.28'	31.42'
C2	17°08'19"	236.00'	S08°55'02"E	70.33'	70.59'
C3	17°12'03"	264.00'	S08°53'10"E	78.96'	79.26'
C4	23°15'22"	76.00'	S11°54'49"E	30.64'	30.85'
C5	23°15'22"	84.00'	S11°54'49"E	33.86'	34.10'
C6	37°47'04"	62.00'	S18°36'24"W	40.15'	40.89'

This illustration does not represent a monumented survey. It is intended only to depict the attached legal description.

 MERRICK®	PAINTED PRAIRIE METROPOLITAN DISTRICT NO. 4-2	DATE: 11/16/22

5970 Greenwood Plaza Blvd., Greenwood Village, CO 80111
 Telephone: 303-751-0741

EXHIBIT A

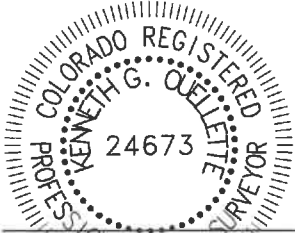
SECTION 11, TOWNSHIP 3 SOUTH, RANGE 66 WEST 6th P.M.
-----CITY OF AURORA, COUNTY OF ADAMS, STATE OF COLORADO-----

PROPERTY DESCRIPTION

A PARCEL OF LAND BEING A PORTION OF SECTION 11, TOWNSHIP 3 SOUTH, RANGE 66 WEST OF THE 6TH PRINCIPAL MERIDIAN, CITY OF AURORA, COUNTY OF ADAMS, STATE OF COLORADO AND BEING MORE PARTICULARLY DESCRIBED AS FOLLOWS:

BEARINGS ARE ASSUMED AND ARE BASED ON THE NORTH LINE OF THE SOUTHWEST QUARTER OF SECTION 11, TOWNSHIP 3 SOUTH, RANGE 66 WEST OF THE 6TH PRINCIPAL MERIDIAN AS BEARING N89°39'07"E BETWEEN THE WEST QUARTER CORNER OF SAID SECTION 11 AND THE CENTER QUARTER CORNER OF SAID SECTION 11. BASED ON THE CITY OF AURORA HORIZONTAL CONTROL NETWORK, COLORADO STATE PLANE CENTRAL ZONE 1983/1992 HARN. THIS DESCRIPTION UTILIZED RECORDED DOCUMENTS FROM THE ADAMS COUNTY CLERK AND RECORDER'S OFFICE AND DOES NOT REPRESENT A MONUMENTED LAND SURVEY AND SHOULD NOT BE RELIED UPON AS SUCH.

COMMENCING AT SAID WEST QUARTER CORNER OF SECTION 11;
THENCE S66°51'03"E A DISTANCE OF 1314.15 FEET TO THE **POINT OF BEGINNING**;
THENCE N49°26'01"W A DISTANCE OF 14.12 FEET;
THENCE N32°04'30"W A DISTANCE OF 97.03 FEET;
THENCE N00°15'41"E A DISTANCE OF 779.82 FEET;
THENCE N11°32'21"E A DISTANCE OF 235.94 FEET;
THENCE N41°13'08"W A DISTANCE OF 129.18 FEET;
THENCE N74°53'52"W A DISTANCE OF 174.77 FEET;
THENCE N15°03'18"E A DISTANCE OF 99.79 FEET;
THENCE N74°57'59"W A DISTANCE OF 109.64 FEET;
THENCE N14°37'58"E A DISTANCE OF 120.70 FEET;
THENCE N77°22'47"W NON-TANGENT WITH THE FOLLOWING DESCRIBED CURVE A DISTANCE OF 25.76 FEET;
THENCE ALONG THE ARC OF A CURVE TO THE RIGHT, HAVING A CENTRAL ANGLE OF 61°19'01", A RADIUS OF 259.06 FEET, A CHORD BEARING N44°19'37"W A DISTANCE OF 264.20 FEET, AND AN ARC DISTANCE OF 277.24 FEET;
THENCE N01°43'48"W NON-TANGENT WITH THE LAST DESCRIBED CURVE A DISTANCE OF 180.98 FEET;
THENCE N89°30'47"E NON-TANGENT WITH THE FOLLOWING DESCRIBED CURVE A DISTANCE OF 62.00 FEET;
THENCE ALONG THE ARC OF A CURVE TO THE RIGHT, HAVING A CENTRAL ANGLE OF 90°29'13", A RADIUS OF 20.00 FEET, A CHORD BEARING N44°45'24"E A DISTANCE OF 28.40 FEET, AND AN ARC DISTANCE OF 31.59 FEET;



KENNETH G. OUELLETTE, P.L.S. 24673
DATE: NOVEMBER 16, 2022
JOB NO. 65419757
FOR AND ON BEHALF OF MERRICK & COMPANY



MERRICK

5970 Greenwood Plaza Blvd., Greenwood Village, CO 80111
Telephone: 303-751-0741

PAINTED PRAIRIE METROPOLITAN
DISTRICT NO. 4-3

DATE: 11/16/22

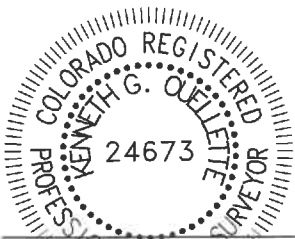
SHEET: 1 OF 5

EXHIBIT A

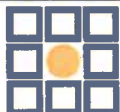
SECTION 11, TOWNSHIP 3 SOUTH, RANGE 66 WEST 6th P.M.
-----CITY OF AURORA, COUNTY OF ADAMS, STATE OF COLORADO-----

PROPERTY DESCRIPTION

THENCE N90°00'00"E TANGENT WITH THE FOLLOWING DESCRIBED CURVE A DISTANCE OF 23.63 FEET;
THENCE ALONG THE ARC OF A CURVE TO THE RIGHT, HAVING A CENTRAL ANGLE OF 30°43'30", A
RADIUS OF 217.00 FEET, A CHORD BEARING S74°38'15"E A DISTANCE OF 114.98 FEET, AND AN ARC
DISTANCE OF 116.37 FEET;
THENCE S59°16'29"E TANGENT WITH THE FOLLOWING DESCRIBED CURVE A DISTANCE OF 156.78 FEET;
THENCE ALONG THE ARC OF A CURVE TO THE LEFT, HAVING A CENTRAL ANGLE OF 15°41'29", A
RADIUS OF 533.00 FEET, A CHORD BEARING S67°07'14"E A DISTANCE OF 145.52 FEET, AND AN ARC
DISTANCE OF 145.97 FEET;
THENCE S74°57'59"E TANGENT WITH THE FOLLOWING DESCRIBED CURVE A DISTANCE OF 155.74 FEET;
THENCE ALONG THE ARC OF A CURVE TO THE LEFT, HAVING A CENTRAL ANGLE OF 15°22'54", A
RADIUS OF 2533.00 FEET, A CHORD BEARING S82°39'26"E A DISTANCE OF 677.97 FEET, AND AN
ARC DISTANCE OF 680.01 FEET;
THENCE N89°39'07"E TANGENT WITH THE FOLLOWING DESCRIBED CURVE A DISTANCE OF 234.61 FEET;
THENCE ALONG THE ARC OF A CURVE TO THE RIGHT, HAVING A CENTRAL ANGLE OF 92°47'42", A
RADIUS OF 20.00 FEET, A CHORD BEARING S43°57'02"E A DISTANCE OF 28.97 FEET, AND AN ARC
DISTANCE OF 32.39 FEET;
THENCE ALONG THE ARC OF A CURVE TO THE LEFT, HAVING A CENTRAL ANGLE OF 02°56'02", A
RADIUS OF 980.50 FEET, A CHORD BEARING S00°58'48"W A DISTANCE OF 50.20 FEET, AND AN ARC
DISTANCE OF 50.21 FEET;
THENCE S00°29'13"E A DISTANCE OF 716.47 FEET;
THENCE S04°16'37"W A DISTANCE OF 24.08 FEET;
THENCE S00°29'13"E TANGENT WITH THE FOLLOWING DESCRIBED CURVE A DISTANCE OF 180.31 FEET;
THENCE ALONG THE ARC OF A CURVE TO THE RIGHT, HAVING A CENTRAL ANGLE OF 90°08'20", A
RADIUS OF 20.00 FEET, A CHORD BEARING S44°34'57"W A DISTANCE OF 28.32 FEET, AND AN ARC
DISTANCE OF 31.46 FEET;
THENCE S01°44'17"E NON-TANGENT WITH THE FOLLOWING DESCRIBED CURVE A DISTANCE OF 96.03
FEET;
THENCE ALONG THE ARC OF A CURVE TO THE RIGHT, HAVING A CENTRAL ANGLE OF 89°51'40", A
RADIUS OF 20.00 FEET, A CHORD BEARING S45°25'03"E A DISTANCE OF 28.25 FEET, AND AN ARC
DISTANCE OF 31.37 FEET;
THENCE S00°29'13"E TANGENT WITH THE FOLLOWING DESCRIBED CURVE A DISTANCE OF 656.18 FEET;



KENNETH G. OELLELTE, P.L.S. 24673
DATE: NOVEMBER 16, 2022
JOB NO. 65419757
FOR AND ON BEHALF OF MERRICK & COMPANY



MERRICK

5970 Greenwood Plaza Blvd., Greenwood Village, CO 80111
Telephone: 303-751-0741

PAINTED PRAIRIE METROPOLITAN
DISTRICT NO. 4-3

DATE: 11/16/22

SHEET: 2 OF 5

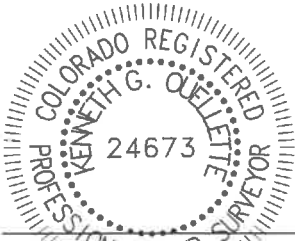
EXHIBIT A

SECTION 11, TOWNSHIP 3 SOUTH, RANGE 66 WEST 6th P.M.
-----CITY OF AURORA, COUNTY OF ADAMS, STATE OF COLORADO-----

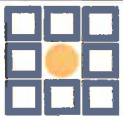
PROPERTY DESCRIPTION

THENCE ALONG THE ARC OF A CURVE TO THE RIGHT, HAVING A CENTRAL ANGLE OF 90°08'12", A RADIUS OF 20.00 FEET, A CHORD BEARING S44°34'53"W A DISTANCE OF 28.32 FEET, AND AN ARC DISTANCE OF 31.46 FEET;
THENCE S00°35'54"E A DISTANCE OF 49.00 FEET;
THENCE S89°39'00"W A DISTANCE OF 1097.86 FEET;
THENCE N00°20'53"W TANGENT WITH THE FOLLOWING DESCRIBED CURVE A DISTANCE OF 75.40 FEET;
THENCE ALONG THE ARC OF A CURVE TO THE RIGHT, HAVING A CENTRAL ANGLE OF 40°54'53", A RADIUS OF 296.00 FEET, A CHORD BEARING N20°06'33"E A DISTANCE OF 206.91 FEET, AND AN ARC DISTANCE OF 211.37 FEET TO THE **POINT OF BEGINNING**.

CONTAINING 52.088 ACRES, MORE OR LESS.



KENNETH G. OELLETT, P.L.S. 24673
DATE: NOVEMBER 16, 2022
JOB NO. 65419757
FOR AND ON BEHALF OF MERRICK & COMPANY



MERRICK®

5970 Greenwood Plaza Blvd., Greenwood Village, CO 80111
Telephone: 303-751-0741

PAINTED PRAIRIE METROPOLITAN
DISTRICT NO. 4-3

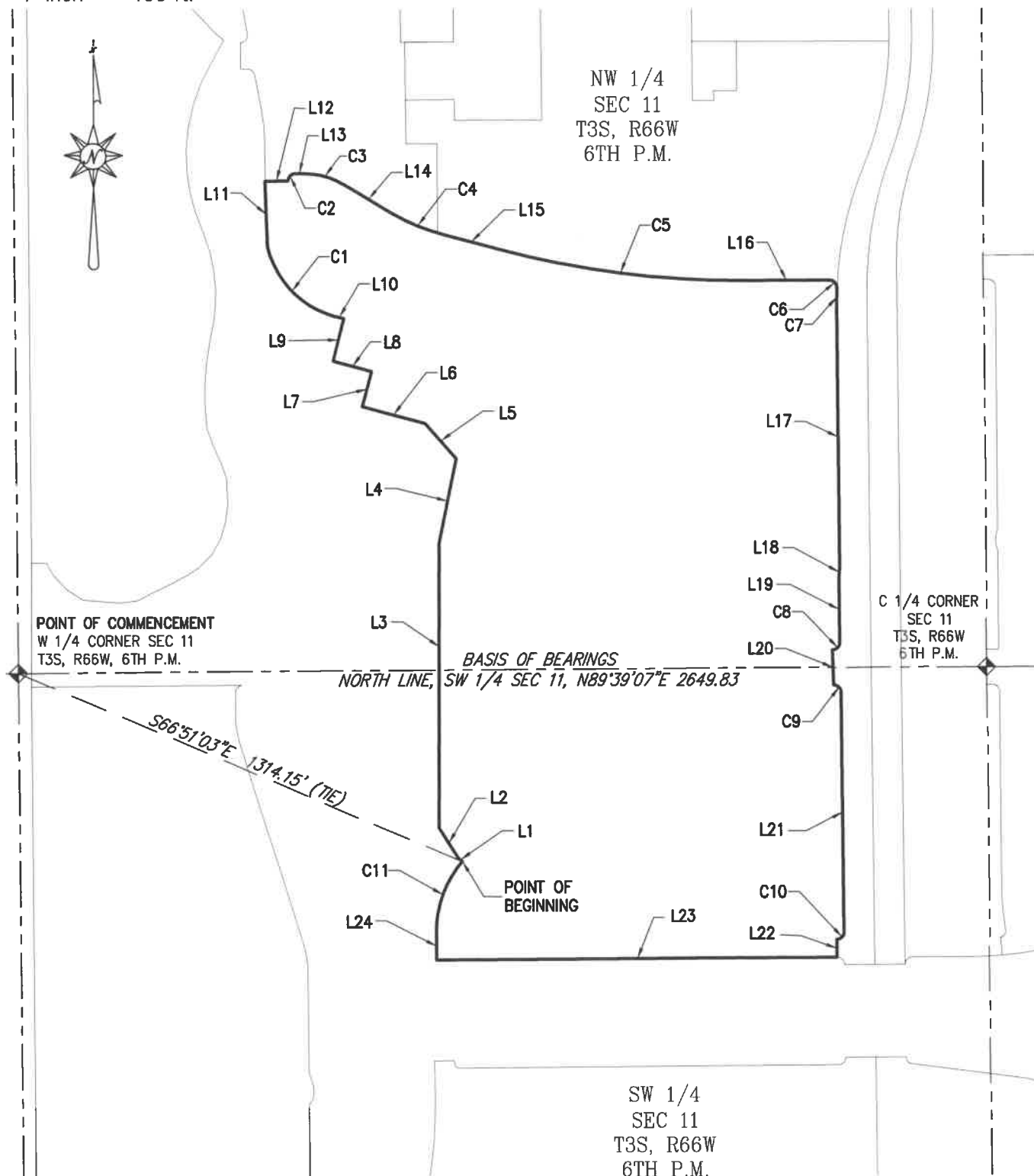
DATE: 11/16/22

SHEET: 3 OF 5



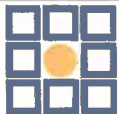
1 inch = 400 ft.

ILLUSTRATION FOR EXHIBIT A



THE ABOVE DESCRIBED PARCEL CONTAINS 52.088 ACRES MORE OR LESS.

This illustration does not represent a monumented survey. It is intended only to depict the attached legal description.



MERRICK

5970 Greenwood Plaza Blvd., Greenwood Village, CO 80111
Telephone: 303-751-0741

PAINTED PRAIRIE METROPOLITAN
DISTRICT NO. 4-3

DATE: 11/16/22

SHEET: 4 OF 5

ILLUSTRATION FOR EXHIBIT A

LINE TABLE		
LINE #	BEARING	LENGTH
L1	N49°26'01"W	14.12'
L2	N32°04'30"W	97.03'
L3	N00°15'41"E	779.82'
L4	N11°32'21"E	235.94'
L5	N41°13'08"W	129.18'
L6	N74°53'52"W	174.77'
L7	N15°03'18"E	99.79'
L8	N74°57'59"W	109.64'
L9	N14°37'58"E	120.70'
L10	N77°22'47"W	25.76'
L11	N01°43'48"W	180.98'
L12	N89°30'47"E	62.00'
L13	N90°00'00"E	23.63'
L14	S59°16'29"E	156.78'
L15	S74°57'59"E	155.74'
L16	N89°39'07"E	234.61'
L17	S00°29'13"E	716.47'
L18	S04°16'37"W	24.08'
L19	S00°29'13"E	180.31'
L20	S01°44'17"E	96.03'

LINE TABLE		
LINE #	BEARING	LENGTH
L21	S00°29'13"E	656.18'
L22	S00°35'54"E	49.00'
L23	S89°39'00"W	1097.86'
L24	N00°20'53"W	75.40'

CURVE TABLE					
CURVE #	DELTA	RADIUS	CHORD BEARING	CHORD LENGTH	LENGTH
C1	61°19'01"	259.06'	N44°19'37"W	264.20'	277.24'
C2	90°29'13"	20.00'	N44°45'24"E	28.40'	31.59'
C3	30°43'30"	217.00'	S74°38'15"E	114.98'	116.37'
C4	15°41'29"	533.00'	S67°07'14"E	145.52'	145.97'
C5	15°22'54"	2533.00'	S82°39'26"E	677.97'	680.01'
C6	92°47'42"	20.00'	S43°57'02"E	28.97'	32.39'
C7	2°56'02"	980.50'	S00°58'48"W	50.20'	50.21'
C8	90°08'20"	20.00'	S44°34'57"W	28.32'	31.46'
C9	89°51'40"	20.00'	S45°25'03"E	28.25'	31.37'
C10	90°08'12"	20.00'	S44°34'53"W	28.32'	31.46'
C11	40°54'53"	296.00'	N20°06'33"E	206.91'	211.37'

This illustration does not represent a monumented survey. It is intended only to depict the attached legal description.



MERRICK

5970 Greenwood Plaza Blvd., Greenwood Village, CO 80111
Telephone: 303-751-0741

PAINTED PRAIRIE METROPOLITAN
DISTRICT NO. 4-3

DATE: 11/16/22

SHEET: 5 OF 5

EXHIBIT A

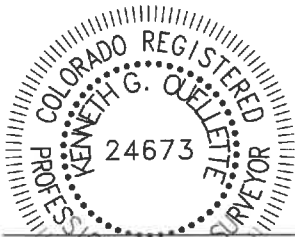
SECTION 11, TOWNSHIP 3 SOUTH, RANGE 66 WEST 6th P.M.
-----CITY OF AURORA, COUNTY OF ADAMS, STATE OF COLORADO-----

PROPERTY DESCRIPTION

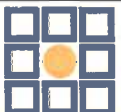
A PARCEL OF LAND BEING A PORTION OF SECTION 11, TOWNSHIP 3 SOUTH, RANGE 66 WEST OF THE 6TH PRINCIPAL MERIDIAN, CITY OF AURORA, COUNTY OF ADAMS, STATE OF COLORADO AND BEING MORE PARTICULARLY DESCRIBED AS FOLLOWS:

BEARINGS ARE ASSUMED AND ARE BASED ON THE NORTH LINE OF THE SOUTHEAST QUARTER OF SECTION 11, TOWNSHIP 3 SOUTH, RANGE 66 WEST OF THE 6TH PRINCIPAL MERIDIAN AS BEARING N89°39'07"E BETWEEN THE CENTER QUARTER CORNER OF SAID SECTION 11 AND THE EAST QUARTER CORNER OF SAID SECTION 11. BASED ON THE CITY OF AURORA HORIZONTAL CONTROL NETWORK, COLORADO STATE PLANE CENTRAL ZONE 1983/1992 HARN. THIS DESCRIPTION UTILIZED RECORDED DOCUMENTS FROM THE ADAMS COUNTY CLERK AND RECORDER'S OFFICE AND DOES NOT REPRESENT A MONUMENTED LAND SURVEY AND SHOULD NOT BE RELIED UPON AS SUCH.

COMMENCING AT SAID CENTER QUARTER CORNER OF SECTION 11;
THENCE S51°57'47"E A DISTANCE OF 2163.82 FEET TO THE **POINT OF BEGINNING**;
THENCE S34°59'28"E NON-TANGENT WITH THE FOLLOWING DESCRIBED CURVE A DISTANCE OF 48.88 FEET;
THENCE ALONG THE ARC OF A CURVE TO THE RIGHT, HAVING A CENTRAL ANGLE OF 83°08'05", A RADIUS OF 20.00 FEET, A CHORD BEARING S83°19'28"E A DISTANCE OF 26.54 FEET, AND AN ARC DISTANCE OF 29.02 FEET;
THENCE N48°52'00"E NON-TANGENT WITH THE FOLLOWING DESCRIBED CURVE A DISTANCE OF 70.00 FEET;
THENCE ALONG THE ARC OF A CURVE TO THE RIGHT, HAVING A CENTRAL ANGLE OF 83°56'29", A RADIUS OF 20.00 FEET, A CHORD BEARING N00°13'02"E A DISTANCE OF 26.75 FEET, AND AN ARC DISTANCE OF 29.30 FEET;
THENCE ALONG THE ARC OF A CURVE TO THE LEFT, HAVING A CENTRAL ANGLE OF 31°55'04", A RADIUS OF 469.00 FEET, A CHORD BEARING N26°13'33"E A DISTANCE OF 257.90 FEET, AND AN ARC DISTANCE OF 261.27 FEET;
THENCE S86°28'17"E NON-TANGENT WITH THE FOLLOWING DESCRIBED CURVE A DISTANCE OF 110.31 FEET;
THENCE ALONG THE ARC OF A CURVE TO THE RIGHT, HAVING A CENTRAL ANGLE OF 03°21'17", A RADIUS OF 425.00 FEET, A CHORD BEARING S05°12'20"W A DISTANCE OF 24.88 FEET, AND AN ARC DISTANCE OF 24.88 FEET;
THENCE N89°46'10"E A DISTANCE OF 558.48 FEET;
THENCE S00°13'50"E A DISTANCE OF 554.44 FEET;



KENNETH G. OLETTE, P.L.S. 24673
DATE: NOVEMBER 16, 2022
JOB NO. 65419757
FOR AND ON BEHALF OF MERRICK & COMPANY



MERRICK

5970 Greenwood Plaza Blvd., Greenwood Village, CO 80111
Telephone: 303-751-0741

PAINTED PRAIRIE METROPOLITAN
DISTRICT NO. 4-4

DATE: 11/16/22

SHEET: 1 OF 4

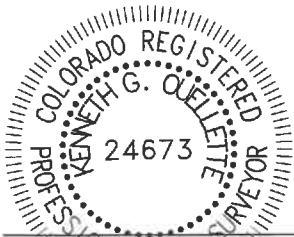
EXHIBIT A

SECTION 11, TOWNSHIP 3 SOUTH, RANGE 66 WEST 6th P.M.
-----CITY OF AURORA, COUNTY OF ADAMS, STATE OF COLORADO-----

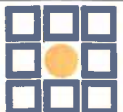
PROPERTY DESCRIPTION

THENCE S89°46'10"W A DISTANCE OF 598.65 FEET;
THENCE S89°46'10"W TANGENT WITH THE FOLLOWING DESCRIBED CURVE A DISTANCE OF 119.44 FEET;
THENCE ALONG THE ARC OF A CURVE TO THE LEFT, HAVING A CENTRAL ANGLE OF 12°37'33", A RADIUS OF 600.00 FEET, A CHORD BEARING S83°27'23"W A DISTANCE OF 131.95 FEET, AND AN ARC DISTANCE OF 132.22 FEET;
THENCE S77°08'37"W TANGENT WITH THE FOLLOWING DESCRIBED CURVE A DISTANCE OF 120.96 FEET;
THENCE ALONG THE ARC OF A CURVE TO THE RIGHT, HAVING A CENTRAL ANGLE OF 30°51'29", A RADIUS OF 1514.50 FEET, A CHORD BEARING N87°25'38"W A DISTANCE OF 805.85 FEET, AND AN ARC DISTANCE OF 815.67 FEET;
THENCE N73°48'33"W TANGENT WITH THE FOLLOWING DESCRIBED CURVE A DISTANCE OF 355.73 FEET;
THENCE ALONG THE ARC OF A CURVE TO THE LEFT, HAVING A CENTRAL ANGLE OF 16°32'19", A RADIUS OF 600.00 FEET, A CHORD BEARING N82°04'42"W A DISTANCE OF 172.59 FEET, AND AN ARC DISTANCE OF 173.19 FEET;
THENCE S89°38'00"W A DISTANCE OF 614.24 FEET;
THENCE N00°29'13"W A DISTANCE OF 476.37 FEET;
THENCE N89°40'37"E NON-TANGENT WITH THE FOLLOWING DESCRIBED CURVE A DISTANCE OF 83.23 FEET;
THENCE ALONG THE ARC OF A CURVE TO THE LEFT, HAVING A CENTRAL ANGLE OF 99°48'44", A RADIUS OF 15.00 FEET, A CHORD BEARING S40°26'56"E A DISTANCE OF 22.95 FEET, AND AN ARC DISTANCE OF 26.13 FEET;
THENCE S82°54'52"E A DISTANCE OF 329.26 FEET;
THENCE S73°48'33"E A DISTANCE OF 582.60 FEET;
THENCE S70°24'27"E A DISTANCE OF 85.98 FEET;
THENCE S73°48'33"E TANGENT WITH THE FOLLOWING DESCRIBED CURVE A DISTANCE OF 207.15 FEET;
THENCE ALONG THE ARC OF A CURVE TO THE LEFT, HAVING A CENTRAL ANGLE OF 22°38'35", A RADIUS OF 1200.00 FEET, A CHORD BEARING S85°07'51"E A DISTANCE OF 471.16 FEET, AND AN ARC DISTANCE OF 474.24 FEET;
THENCE N83°32'51"E TANGENT WITH THE FOLLOWING DESCRIBED CURVE A DISTANCE OF 86.95 FEET;
THENCE ALONG THE ARC OF A CURVE TO THE LEFT, HAVING A CENTRAL ANGLE OF 28°26'49", A RADIUS OF 420.00 FEET, A CHORD BEARING N69°19'27"E A DISTANCE OF 206.39 FEET, AND AN ARC DISTANCE OF 208.53 FEET TO THE POINT OF BEGINNING.

CONTAINING 26.988 ACRES, MORE OR LESS.



KENNETH G. OUELLETTE, P.L.S. 24673
DATE: NOVEMBER 16, 2022
JOB NO. 65419757
FOR AND ON BEHALF OF MERRICK & COMPANY



MERRICK

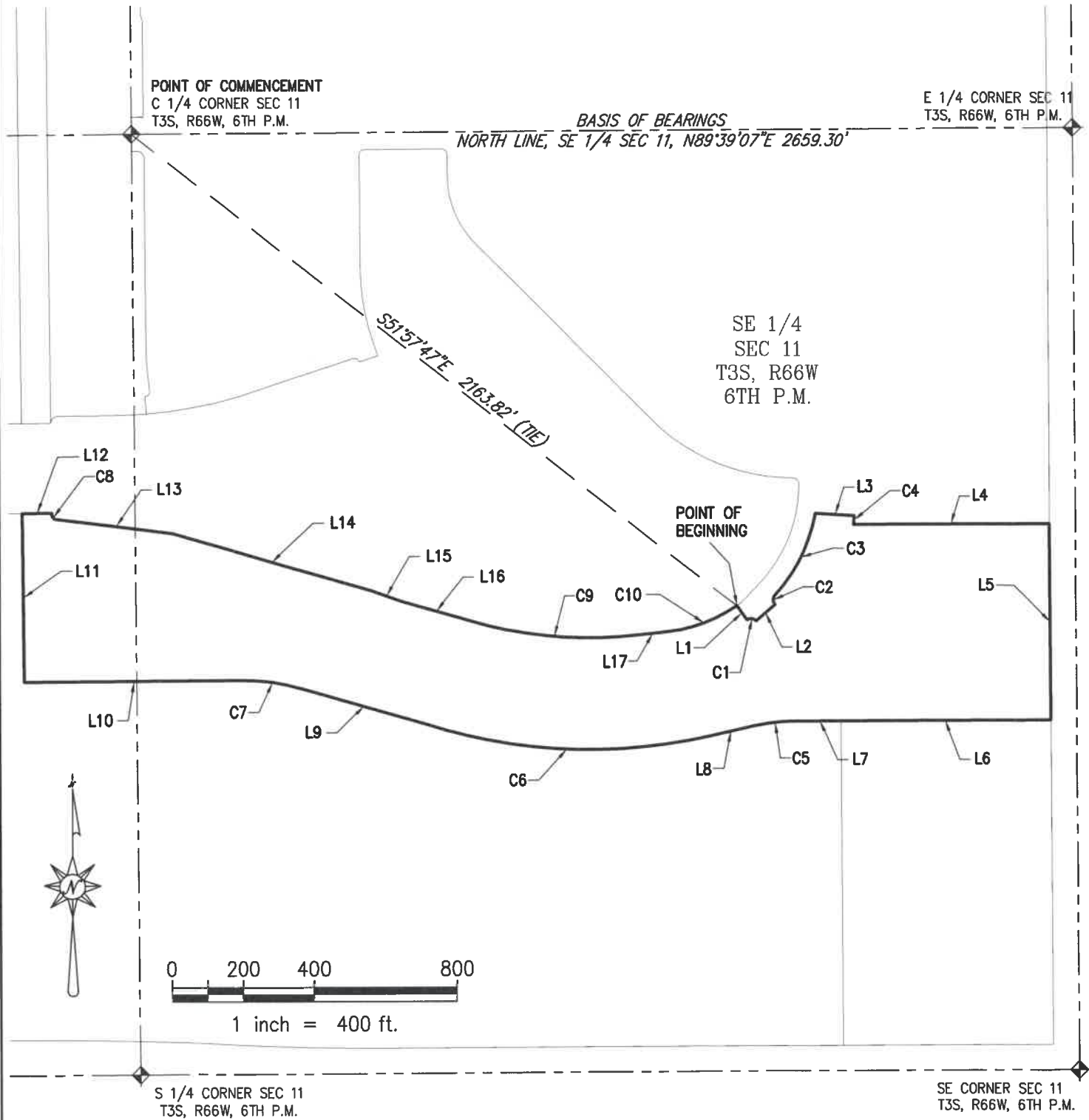
5970 Greenwood Plaza Blvd., Greenwood Village, CO 80111
Telephone: 303-751-0741

PAINTED PRAIRIE METROPOLITAN
DISTRICT NO. 4-4

DATE: 11/16/22

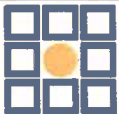
SHEET: 2 OF 4

ILLUSTRATION FOR EXHIBIT A



THE ABOVE DESCRIBED PARCEL CONTAINS 26.988 ACRES MORE OR LESS.

This illustration does not represent a monumented survey. It is intended only to depict the attached legal description.



MERRICK

5970 Greenwood Plaza Blvd., Greenwood Village, CO 80111
Telephone: 303-751-0741

PAINTED PRAIRIE METROPOLITAN
DISTRICT NO. 4-4

DATE: 11/16/22

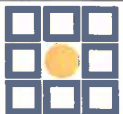
SHEET: 3 OF 4

ILLUSTRATION FOR EXHIBIT A

LINE TABLE		
LINE #	BEARING	LENGTH
L1	S34°59'28"E	48.88'
L2	N48°52'00"E	70.00'
L3	S86°28'17"E	110.31'
L4	N89°46'10"E	558.48'
L5	S00°13'50"E	554.44'
L6	S89°46'10"W	598.65'
L7	S89°46'10"W	119.44'
L8	S77°08'37"W	120.96'
L9	N73°48'33"W	355.73'
L10	S89°38'00"W	614.24'
L11	N00°29'13"W	476.37'
L12	N89°40'37"E	83.23'
L13	S82°54'52"E	329.26'
L14	S73°48'33"E	582.60'
L15	S70°24'27"E	85.98'
L16	S73°48'33"E	207.15'
L17	N83°32'51"E	86.95'

CURVE TABLE					
CURVE #	DELTA	RADIUS	CHORD BEARING	CHORD LENGTH	LENGTH
C1	83°08'05"	20.00'	S83°19'28"E	26.54'	29.02'
C2	83°56'29"	20.00'	N00°13'02"E	26.75'	29.30'
C3	31°55'04"	469.00'	N26°13'33"E	257.90'	261.27'
C4	3°21'17"	425.00'	S05°12'20"W	24.88'	24.88'
C5	12°37'33"	600.00'	S83°27'23"W	131.95'	132.22'
C6	30°51'29"	1514.50'	N87°25'38"W	805.85'	815.67'
C7	16°32'19"	600.00'	N82°04'42"W	172.59'	173.19'
C8	99°48'44"	15.00'	S40°26'56"E	22.95'	26.13'
C9	22°38'35"	1200.00'	S85°07'51"E	471.16'	474.24'
C10	28°26'49"	420.00'	N69°19'27"E	206.39'	208.53'

This illustration does not represent a monumented survey. It is intended only to depict the attached legal description.



MERRICK

5970 Greenwood Plaza Blvd., Greenwood Village, CO 80111
Telephone: 303-751-0741

PAINTED PRAIRIE METROPOLITAN
DISTRICT NO. 4-4

DATE: 11/16/22

SHEET: 4 OF 4

EXHIBIT A

NE 1/4, SECTION 11, TOWNSHIP 3 SOUTH, RANGE 66 WEST 6th P.M.
-----CITY OF AURORA, COUNTY OF ADAMS, STATE OF COLORADO-----

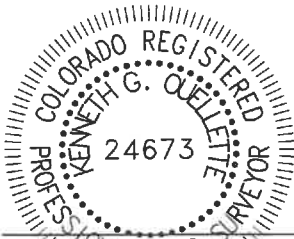
PROPERTY DESCRIPTION

A PARCEL OF LAND BEING A PORTION OF THE NORTHEAST QUARTER OF SECTION 11, TOWNSHIP 3 SOUTH, RANGE 66 WEST OF THE 6TH PRINCIPAL MERIDIAN, CITY OF AURORA, COUNTY OF ADAMS, STATE OF COLORADO AND BEING MORE PARTICULARLY DESCRIBED AS FOLLOWS:

BEARINGS ARE ASSUMED AND ARE BASED ON THE EAST LINE OF THE NORTHEAST QUARTER OF SECTION 11, TOWNSHIP 3 SOUTH, RANGE 66 WEST OF THE 6TH PRINCIPAL MERIDIAN AS BEARING $N00^{\circ}39'21''W$ BETWEEN THE EAST QUARTER CORNER OF SAID SECTION 11 AND THE NORTHEAST CORNER OF SAID SECTION 11. BASED ON THE CITY OF AURORA HORIZONTAL CONTROL NETWORK, COLORADO STATE PLANE CENTRAL ZONE 1983/1992 HARN. THIS DESCRIPTION UTILIZED RECORDED DOCUMENTS FROM THE ADAMS COUNTY CLERK AND RECORDER'S OFFICE AND DOES NOT REPRESENT A MONUMENTED LAND SURVEY AND SHOULD NOT BE RELIED UPON AS SUCH.

COMMENCING AT SAID EAST QUARTER CORNER OF SECTION 11;
THENCE $N04^{\circ}28'54''W$ A DISTANCE OF 1079.06 FEET TO A POINT ON A LINE BEING 72.00 FEET WESTERLY OF AN PARALLEL WITH SAID EAST LINE OF THE NORTHEAST QUARTER OF SECTION 11, SAID POINT BEING THE **POINT OF BEGINNING**;
THENCE $S89^{\circ}20'39''W$ A DISTANCE OF 150.00 FEET;
THENCE $N00^{\circ}39'21''W$ A DISTANCE OF 67.00 FEET;
THENCE $N89^{\circ}20'39''E$ A DISTANCE OF 150.00 FEET TO A POINT ON SAID PARALLEL LINE;
THENCE $S00^{\circ}39'21''E$ ALONG SAID PARALLEL LINE A DISTANCE OF 67.00 FEET TO THE **POINT OF BEGINNING**.

CONTAINING 10,050 SQUARE FEET (0.231 ACRES), MORE OR LESS.



KENNETH G. QUELLETTE, P.L.S. 24673
DATE: JULY 20, 2022
JOB NO. 65419757
FOR AND ON BEHALF OF MERRICK & COMPANY



5970 Greenwood Plaza Blvd., Greenwood Village, CO 80111
Telephone: 303-751-0741

PAINTED PRAIRIE METROPOLITAN
DISTRICT NO. 4 DIRECTOR'S PARCEL

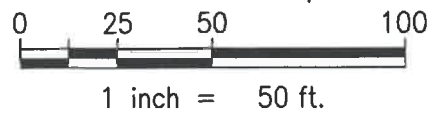
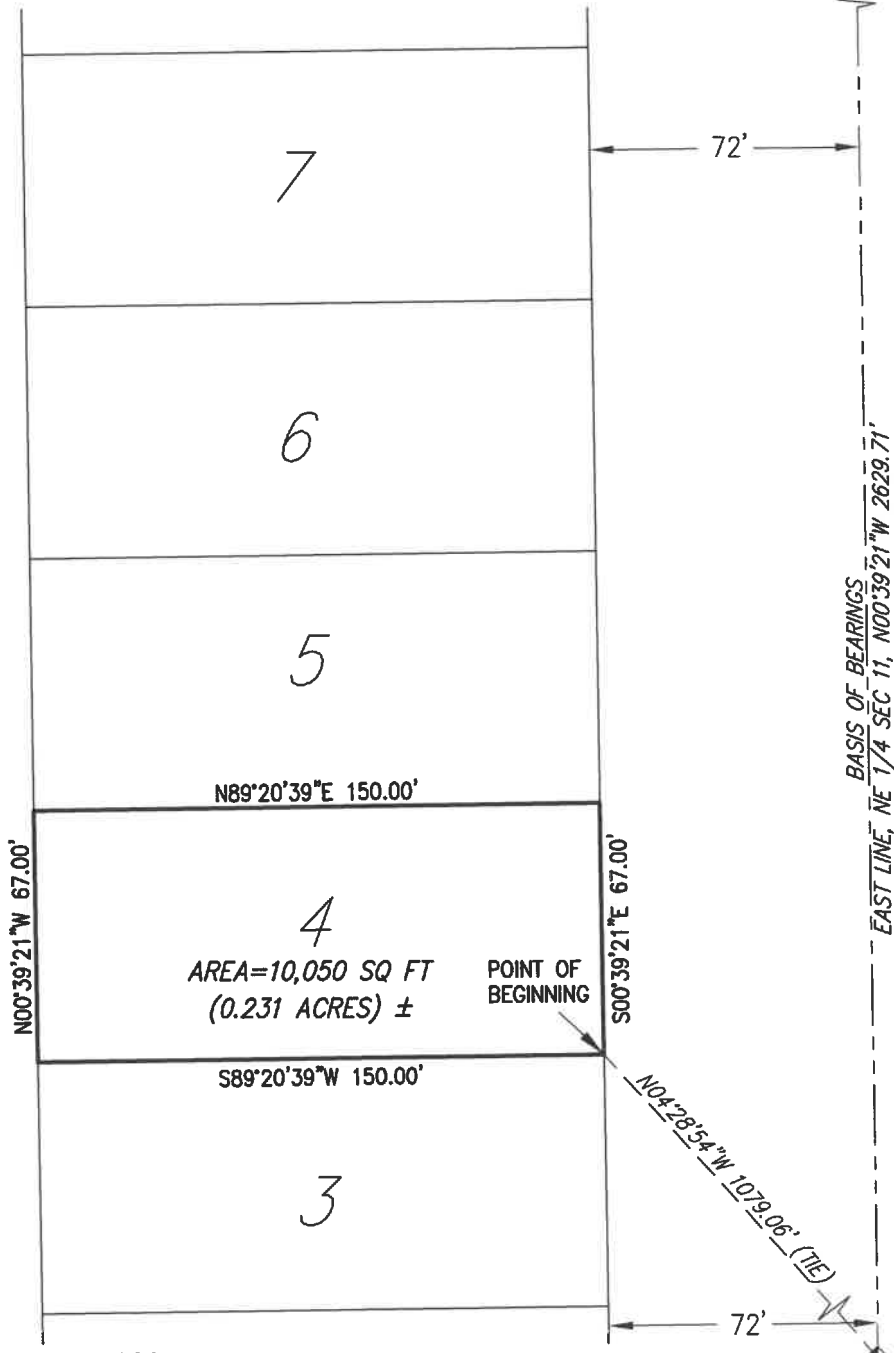
DATE: 7/20/22

SHEET: 1 OF 2

ILLUSTRATION FOR EXHIBIT A

NE COR SEC 11
T3S, R66W, 6TH P.M.

NE 1/4
SEC 11
T3S, R66W
6TH P.M.



POINT OF COMMENCEMENT
E 1/4 COR SEC 11
T3S, R66W, 6TH P.M.

This illustration does not represent a monumented survey. It is intended only to depict the attached legal description.



5970 Greenwood Plaza Blvd., Greenwood Village, CO 80111
Telephone: 303-751-0741

PAINTED PRAIRIE METROPOLITAN
DISTRICT NO. 4 DIRECTOR'S PARCEL

DATE: 7/20/22

SHEET: 2 OF 2